

INSTALLATION INSTRUCTIONS

ENGINE TACHOMETER

- STEP #1 - DISCONNECT ONE CABLE FROM THE BATTERY.
- STEP #2 - REMOVE GLOVE BOX, AND THE GLOVE BOX LAMP IF PRESENT.
- STEP #3 - REMOVE THE FLOOR AIR OUTLET FROM THE HEAD.
- STEP #4 - PULL THE FRONT FLOOR CARPET BACK TO EXPOSE THE TRANSMISSION TUNNEL.
- STEP #5 - IF THERE IS AN INSULATING PAD ON THE TUNNEL, REMOVE THE PAD.
- STEP #6 - DRILL HOLES IN THE TUNNEL. SEE FIGURE #1 OR FIGURE #2.
- STEP #7 - IF THERE IS AN INSULATING PAD, REINSTALL IT AND PUNCH HOLES THRU IT TO LINE UP WITH THE DRILLED HOLES IN THE TUNNEL.
- STEP #8 - FEED THE TACHOMETER WIRE LAMP SOCKET, THE RED WIRE CONNECTOR, AND THE BLACK WIRE TERMINAL UP THRU THE LARGE HOLE IN THE APPROPRIATE BRACKET AND ATTACH THE BRACKET TO THE TUNNEL. SEE FIGURE #1 OR FIGURE #2.
- STEP #9 - FEED THE OTHER END OF THE WIRE ASSEMBLY UP BEHIND THE HEATER CASE AND OUT AT THE TOP WHERE THE DEFROSTER HOSES ARE CONNECTED TO THE CASE. SEE FIGURE #3.
- STEP #10 - PUSH THE JUTE AWAY FROM THE CENTERLINE OF THE CARPET IN THE AREA OF THE BRACKET SO THAT NO JUTE WILL GO ON TOP OF THE BRACKET.
- STEP #11 - REINSTALL THE CARPET.
- STEP #12 - CUT A HOLE IN THE CARPET. SEE FIGURE #4. USE CAUTION TO PREVENT UNRAVELING THE CARPET THREADS OR CUTTING THE WIRES.
- STEP #13 - PUT THE FINISH PLATE, WITH THE RIBS FACING UPWARD, ON THE BASE OF THE HOUSING. SEE FIGURE #1.
- STEP #14 - PULL THE WIRES UP THRU THE CARPET AND FEED THEM UP THRU THE LARGE HOLES IN THE PLATE AND IN THE HOUSING. SEE FIGURE #1.
- STEP #15 - PUT THE WIRE POSITIONING TAB ON THE HOUSING REAR ATTACHING SCREW. SEE FIGURE #1.
- STEP #16 - ATTACH THE HOUSING AND THE PLATE TO THE BRACKET. SEE FIGURE #1.
- STEP #17 - WITH THE BACK OF THE HEAD FACING YOU, AND THE LAMP SOCKET HOLE AT THE TOP, PLACE THE RETAINER ON THE HEAD STUDS SO THAT THE TAB ON THE RETAINER IS ON THE RIGHT STUD. SEE FIGURE #5.
- STEP #18 - PLACE THE BLACK WIRE TERMINAL ON THE LEFT STUD. SEE FIGURE #5.
- STEP #19 - ATTACH THE RETAINER TO THE HEAD. SEE FIGURE #5.
- STEP #20 - PUT THE BULB IN THE SOCKET AND INSERT THE SOCKET INTO THE HOLE IN THE HEAD. SEE FIGURE #5.
- STEP #21 - ATTACH THE RED WIRE CONNECTOR TO THE HEAD TERMINAL. SEE FIGURE #5.
- STEP #22 - PLACE THE U-NUT ON THE END OF THE RETAINER. SEE FIGURE #5.
- STEP #23 - PUT THE GASKET ON THE HEAD.

STEP #24 - MOUNT THE HEAD TO THE HOUSING. SEE FIGURE #5.

STEP #25 - INSTALL WIRE CLIPS AS SHOWN IN FIGURE #3.

STEP #26 - ROUTE THE WIRES, THRU THE INSTALLED CLIPS AND THE EXISTING CLIPS, TO THE FUSE BLOCK. SEE FIGURE #3

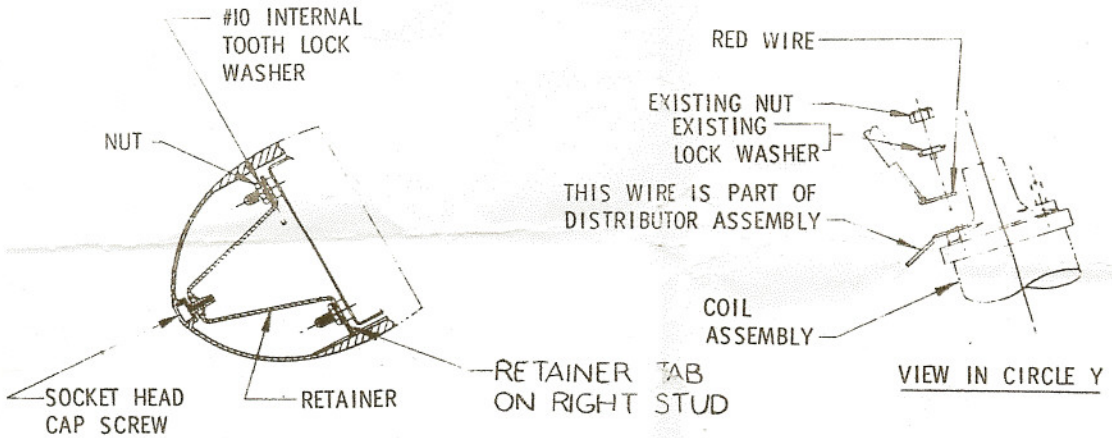
STEP #27 - ATTACH WITH BLUE WIRE CONNECTOR TO THE FUSE BLOCK. SEE FIGURE #3.

STEP #28 - ROUTE THE RED WIRE AND THE BLACK WIRE, THRU THE DASH WIRING GROMMET AND ACROSS THE FRONT OF THE DASH THRU EXISTING CLIPS, TO THE ENGINE COIL. SEE FIGURE #3.

STEP #29 - ATTACH THE RED WIRE TERMINAL TO THE COIL LEFT HAND POST. SEE FIGURE #6.

STEP #30 - ATTACH BLACK WIRE TERMINAL TO COIL BRACKET LEFT HAND ATTACHING SCREW. SEE FIGURE #7.

STEP #31 - REINSTALL THE FLOOR AIR OUTLET, THE GLOVE BOX, AND THE GLOVE BOX LAMP IF PRESENT.



SECTION A-A

FIGURE 6

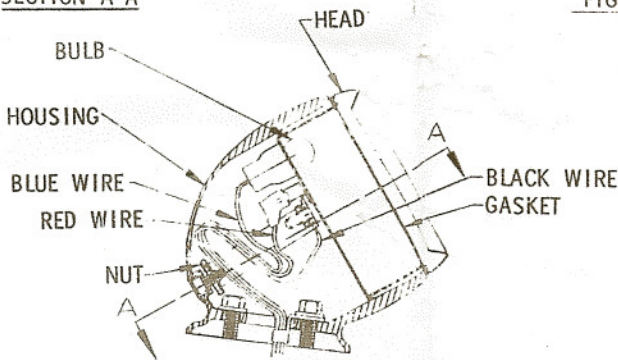
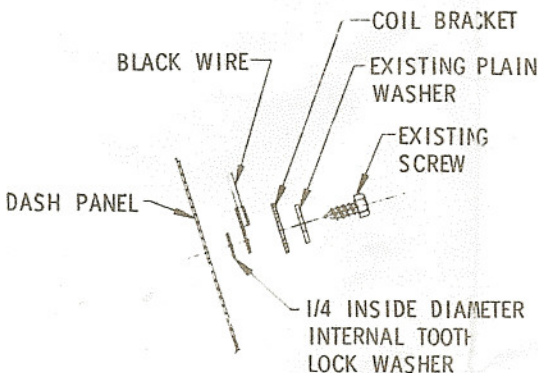
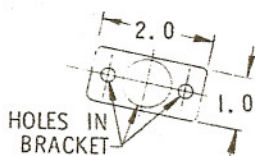
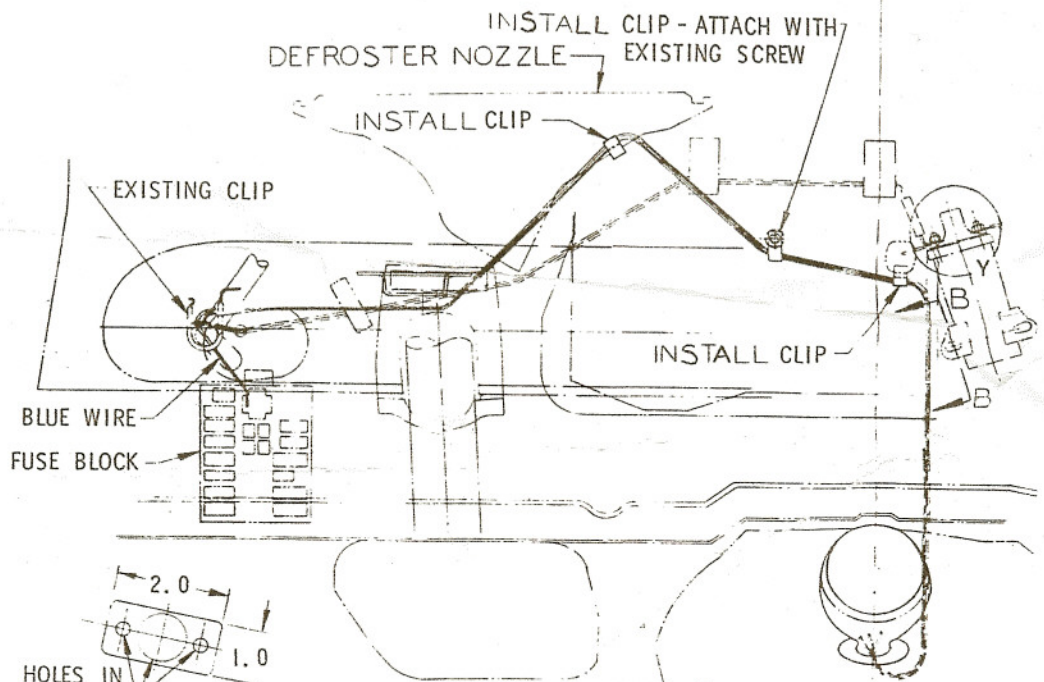
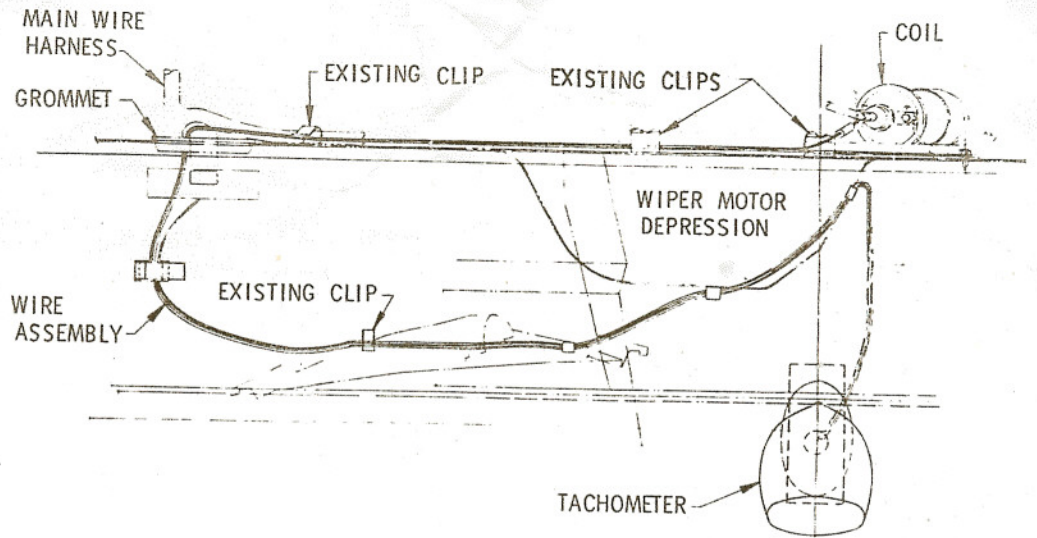


FIGURE 5



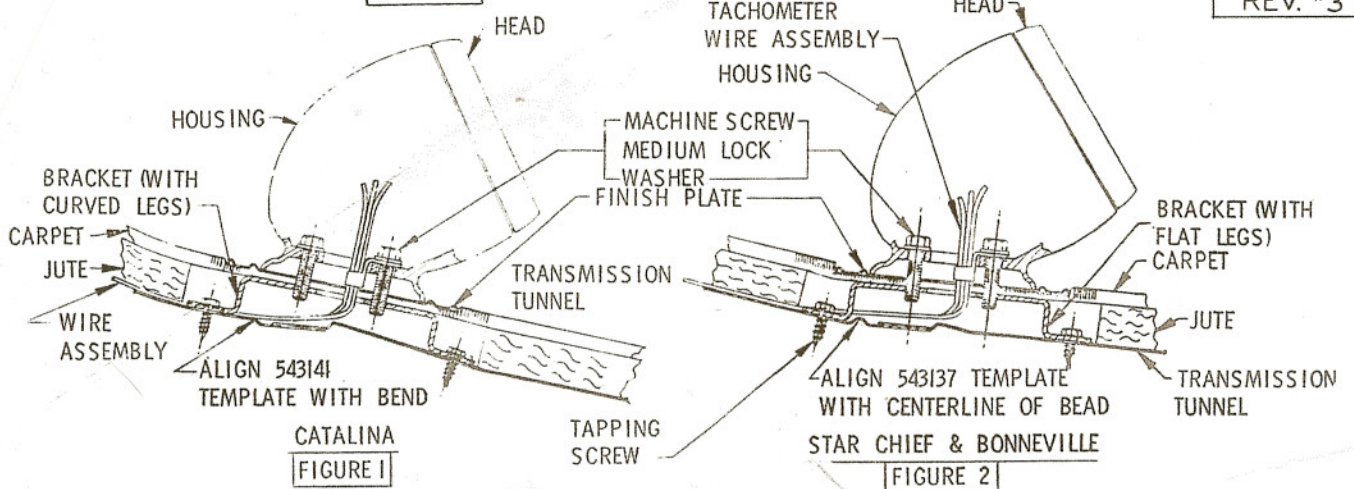
SECTION B-B
FIGURE 7



CUT HOLE IN CARPET
FIGURE 4

FIGURE 3

543267
REV. #3



CATALINA
FIGURE 1

FIGURE 2